



MASTERLINE 8 – WINDOW DOOR

BIM MODELS



MASTERLINE 8 WINDOW DOOR – BIM MODELS

Building Information Modelling (BIM) is an intelligent 3D model-based process where building information is shared between all members involved in the building process. AEC professionals like architects, engineers, general contractors and fabricators use BIM to plan, design, construct and build in a more efficient way. Architects can use the Reynaers BIM models from the start of the conceptual design stage, for better visualization, all the way to the realisation of the building, generating window schedules with detailed info on the used elements.

The Reynaers BIM models are completely parametric and include different design types, building connections and optional add-ons such as sills and shutters.

All models are downloadable on the Reynaers architect website and the website of Bimobject.

On the next sheets, it's possible to find the guidelines for using the Reynaers BIM-models.



MASTERLINE 8 – WINDOW DOOR

Thermal insulation	$U_f = 1.2 \text{ W/m}^2\text{K}$ for 119mm, depending on the frame/vent combination and glazing thickness
Air tightness	Up to 600 Pa (Class 4)
Water tightness	Up to 1200 Pa (Class E1200)
Wind load resistance	Up to 2000 Pa (Class 5)
Acoustic performance	$RW (C;Ctr) = 46 (0;-3) \text{ dB}$, depending on the glazing type
Burglar resistance	Up to RC 2/RC 3 (WK 2/WK 3)

WINDOW DOOR

4 MODELS

- Inward Opening, Single Vent
- Inward Opening, Double Vent
- Outward Opening, Single Vent
- Outward Opening, Double

Download:



OPTIONS INSIDE THE MODEL

BUILDING CONNECTION

- Type A: Netherlands
- Type B: Belgium
- Type C: International

CLOSING BOTTOM

- Brush
- Balcony
- Balcony with gutter
- Threshold

DESIGN VARIANTS

- Functional
- Functional with Block Frame Straight
- Functional with block Frame Slanted
- Déco
- Renaissance

DIMENSIONS

- Height and width element
- Visible width frame
- Visible width vent
- Panel thickness
- Handle height
- Shutter roll height

FEATURES

- Shutter

OPENING DIRECTION

- DIN R
- DIN L
- Tilt

CLOSING DOUBLE WINDOW

- Double Casement
- Integrated Double Casement

MATERIALS

- Color inside/outside profile
- Panel material
- Shutter roll material

ENERGY ANALYSIS

- Standard
- HI
- HI+

ANALYTICAL PARAMETERS

- Information parameters similar to information on website

LEVEL OF DETAIL

- Coarse/medium/fine

DIMENSION PARAMETERS

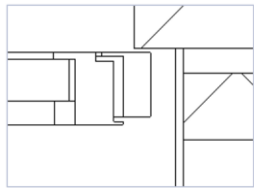
General parameters

- Height EXT: Visible opening in outside wall
- Width EXT: Visible opening in outside wall
- Wall exterior width: Distance between front of the outer wall and front of the window (default 95mm)

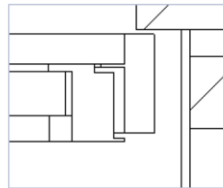
Vent/Frame Parameters

- REY Frame: Visible width of the frame
 - The possible dimensions for every design variant are given
- REY Vent: Visible width of the vent
 - The possible dimensions for every design variant are given

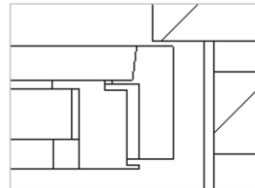
Design Variant



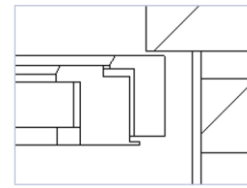
FUNCTIONAL



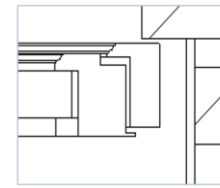
FUNCTIONAL
WITH BLOCK-
FRAME STRAIGHT



FUNCTIONAL
WITH BLOCK-
FRAME SLANTED



DECO



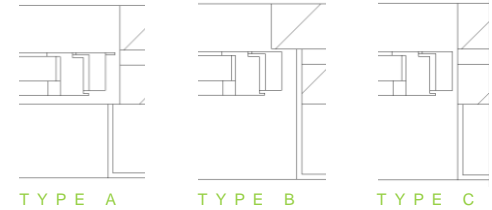
RENAISSANCE

DIMENSION PARAMETERS

Building Connections Type A-B-C

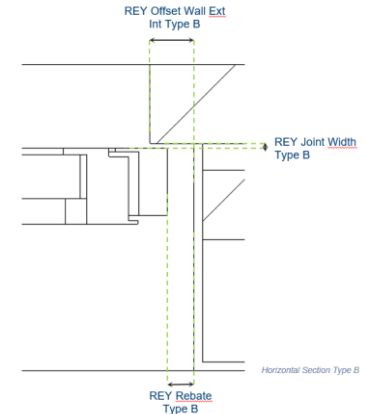
Building connections differ between countries. Reynaers BIM models include parametrical building connection information. For the convenience of the user we have predefined three types of connections (Type A, B, C) most commonly used worldwide.

- REY Building Connection Type A: Opening wall exterior > Opening wall interior
- REY Building Connection Type B: Opening wall exterior < Opening wall interior
- REY Building Connection Type C: Opening wall exterior = Opening wall interior



Parameters for Building Connections:

- REY Rebate: Distance between window and outside wall
- REY Offset Wall Ext Int: Distance between inside- and outside wall
- REY Joint Width: Distance between the inside of the outside wall and the front of the window profile



DIMENSION PARAMETERS

Other Parameters

- REY Panel Thickness: Thickness of the panel/glass (possibilities in brackets)
- REY Fixation Bottom: Distance between bottom side of the window and top of the inner wall
- REY Joint Bottom: Distance between top of the inner wall and top of the outer wall
- REY Handle Height: The distance between the bottom of the window and the handle
- REY Shutter Roll Height: Height of the shutter roll (if activated)

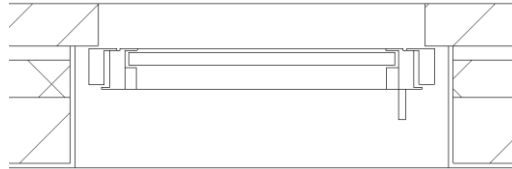
DETAIL LEVELS

3 levels of detail

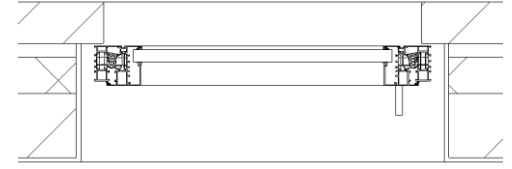
- Coarse
- Medium
- Fine



COARSE



MEDIUM

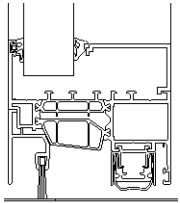


FINE

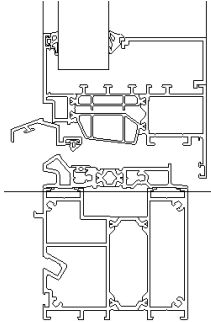
GRAPHICAL PARAMETERS

Parameters Closing Bottom

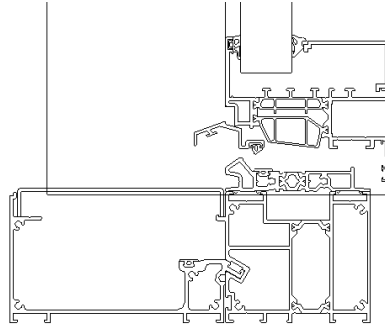
- REY Brush
- REY Balcony
- REY Balcony with Gutter
- REY Threshold



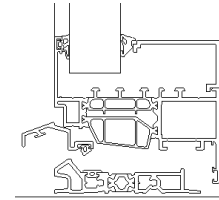
BRUSH



BALCONY



BALCONY WITH GUTTER

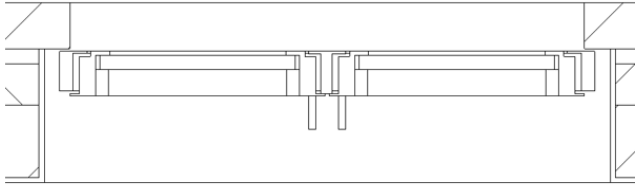


THRESHOLD

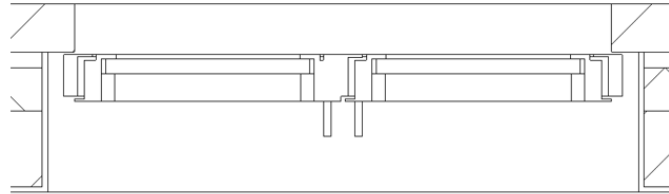
GRAPHICAL PARAMETERS

Parameters Double Vent

- REY Double Casement Window
- REY Integrated Double Casement Window

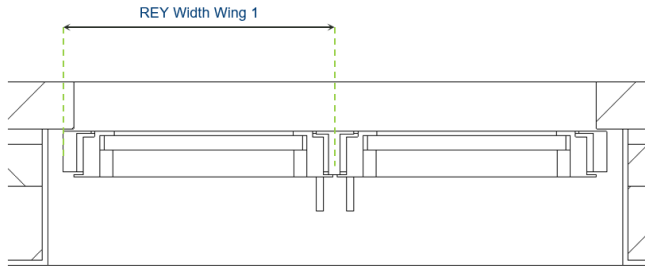


DOUBLE CASEMENT



INTEGRATED DOUBLE CASEMENT

- REY Width Wing 1: It is possible to make the window asymmetric.

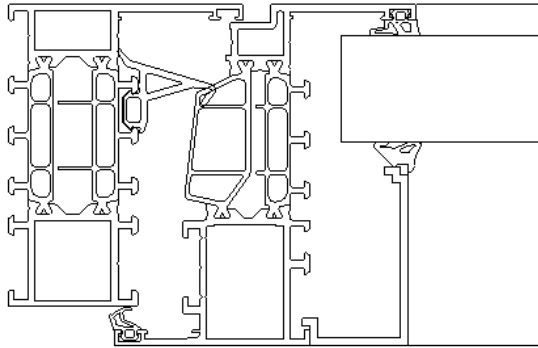


Horizontal Section Type B
Double Casement Window

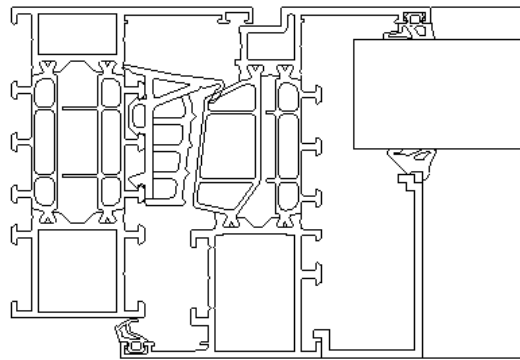
ENERGY ANALYSIS PARAMETERS

Gasket Variant

- Standard
- HI
- HI+



STANDARD



HI / HI+

OTHER PARAMETERS

Graphical parameters

REY Shutter: Option to add a shutter

REY Sill: Option to add a sill

REY Opening Direction: Option to choose between DIN R or DIN L and Tilt

Material and Finishes

Materials for the profiles (inside and outside), the panel and the shutter roll can be chosen.

Reynaers materials

The most popular RAL colours are created as Reynaers materials and can be transferred to your project or your own template:

RAL 9005, RAL 7021, RAL 7016, RAL 9010, RAL 9001 and RAL 7039

Analytical Parameters

List of analytical parameters that can be used in calculations.

For example: REY Panel Surface Total, REY Panel Surface Visible, REY Uf, REY Rw, REY Air Tightness, REY Wind Load Resistance, REY Water Tightness, REY Burglar Resistance, REY Fire Resistance,...



TOGETHER FOR BETTER